



INTELLIGENCE VENTURES

# AI Health Fund I Overview

**AI Health Fund I** is a \$5M Seed fund in the US to invest in AI-driven healthcare with a growing pipeline of 200+ startups, 250+ healthcare co-investor relationships, and a track record of successful venture exits.

Intelligence Ventures invests in:

- Biotech/Pharma Tools
- Medical Devices
- Diagnostics
- Healthcare SaaS

All leveraging AI to reduce costs, improve patient outcomes, and generate enhanced returns through innovative healthcare solutions.

# Leadership



**Doug Nissinoff**

**Managing Partner**

Founder of Renegade BioConsulting, serving as a fractional executive for numerous healthcare startups. Former Head of Life Sciences at a prominent family office and investor at Cancer Fund. Previous roles include Investor Relations at Graphite Bio and Stern IR.

MS in Biotechnology from Georgetown University and BS in Biological Sciences from Florida State University.



**Steve Bernardez**

**Venture Partner**

Former Partner at Avanta Ventures, where he built a portfolio of 21 early-stage startups. Former Partner at ONSET Ventures, helping deploy \$200M and \$205M funds into seed and Series A software investments. 10 portfolio company exits including one Unicorn. Former VC Business Development Director at Microsoft.

MBA and BS in Biological Sciences from Stanford University.



**Joey Bose**

**Venture Partner**

CEO of Cytonics Corporation, where he raised \$15M+, secured \$7M in licensing deals, and advanced a lead osteoarthritis therapy. Former Investment Banking VP at Affinia Capital and Associate at CG Capital Markets, specializing in life sciences and biotech valuations.

MS in Bioengineering from Johns Hopkins University; BS in Bioengineering from the University of Virginia.

# Team



**Liam Lewis, PhD MA**

*Associate*

Senior Consultant at Guidehouse

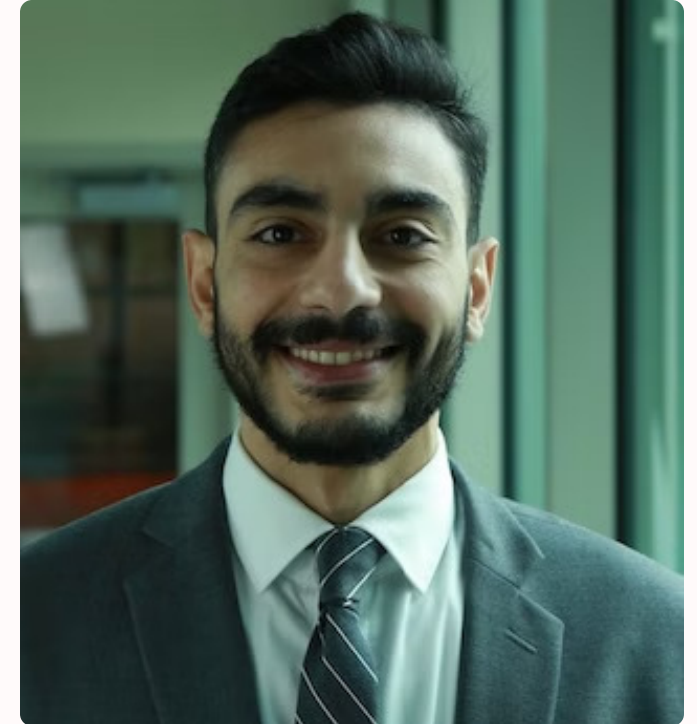
Previous Experience: Venture Fellow at Brazen Capital



**Ioanna Deni, PhD**

*Analyst*

Previous Experience: Technical Research Director at BioPlan Associates, Researcher at Columbia University



**George Gayed, PharmD RAC**

*Analyst*

Manager, Regulatory Affairs at Kite, a Gilead Company

Previous Experience: Regulatory Affairs at Catalyst Pharmaceuticals and Sumitomo Pharma

# Investing in Data-Centric, AI-Powered Healthcare Innovation

We invest in AI-driven companies using proprietary data to transform healthcare. With unique datasets and learning models, they create high barriers to entry and scalable solutions that improve patient outcomes, lower costs, and add value across healthcare. Our focus is on high-impact, unmet needs to drive real industry change.

## Biotech & Pharma Tools

- Cut costs and time in drug development.
- End-to-end optimization for faster therapies.
- AI-driven innovation beyond traditional drugs.

## Medical Devices

- Real-time patient insights.
- Automated healthcare workflows.
- Adaptive, learning devices.
- Faster market access.

## Diagnostics

- Precise, personalized detection.
- Accelerated diagnostic pathways.
- Data-driven model enhancement.

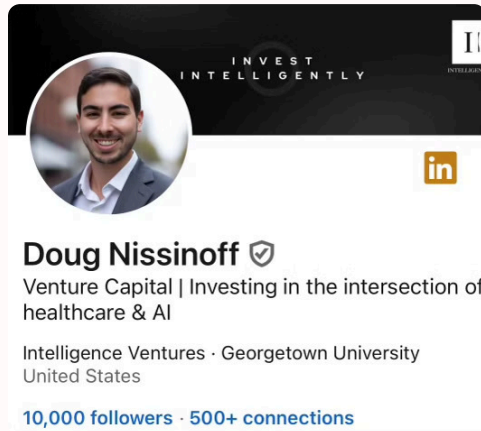
## Healthcare SaaS

- Predictive healthcare insights.
- Operational efficiency.
- New revenue models, improved outcomes.



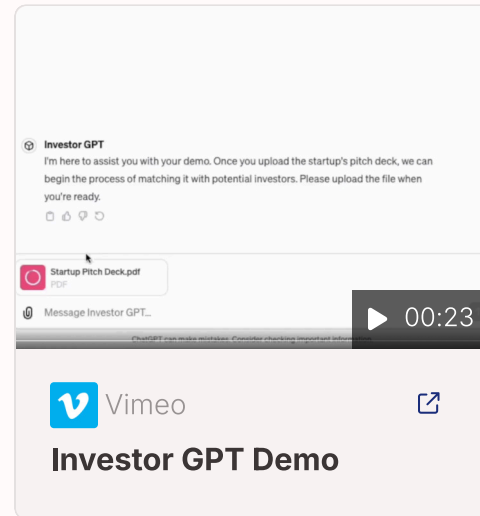
# Our Unfair Advantage for Attracting the Best Deals

*Our multi-channel sourcing strategy consistently identifies ~10-20 new companies per week, and growing!*



## Expanding Influence Across Platforms

With 10,000+ [LinkedIn followers](#) and our blog [The Intelligence Report](#) (1,400+ followers), we generate 5-10 new startup applications per week. Our podcast, [The Intelligence Roundtable](#), attracts additional high-quality deal flow.



## Powerful Investor Network

With an expansive network of hundreds of investors, we maintain strong relationships with top VC firms and consistently share deal flow. Many of these firms trust us to review deals before they deploy, giving us an early advantage to secure better terms before larger firms drive up valuations.



## VC Lab Accelerator Access

As part of the top 8% admitted to the [VC Lab Accelerator](#), we gain elite training and access to their community of 500+ VCs, opening even more avenues for high-quality deal flow.



## Exclusive Family Office Partnership

Through our partnership with a leading family office, we get first access to life science deals from their network of 3,500+ investors, providing us a unique edge in the market.

# What We Look for When Selecting Investments



## Multi-Disciplinary Team

We back teams where world-class scientists collaborate with experienced business leaders. This combination of expertise ensures both innovative breakthroughs and solid execution.



## Unicorn Potential

We invest in companies targeting large, scalable markets with exponential growth potential, positioning them to become industry leaders valued at \$1B or more. We're focused on long-term success rather than quick exits.



## Sound Science

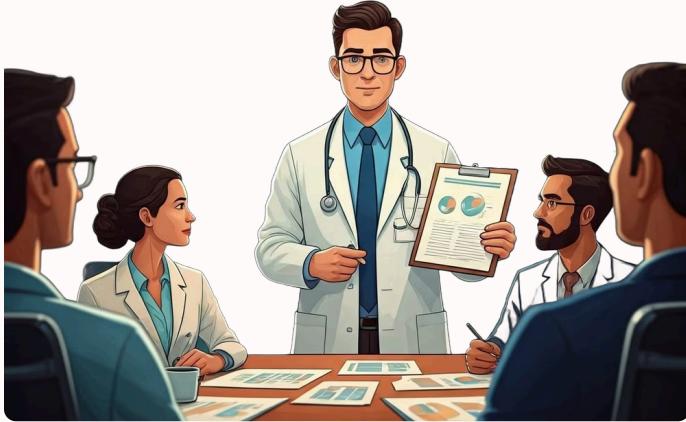
Our investments are rooted in rigorous scientific validation. We prioritize startups with proven research and data that demonstrates clear, measurable outcomes in healthcare.



## Data-Centric AI

We cut through the AI hype to focus on startups with proprietary, high-quality datasets and AI that serves as a critical differentiator in solving complex healthcare challenges.

# How We Add Value to Our Portfolio Companies



## Industry-Experienced Scientists

Our team includes scientists with a deep understanding of both cutting-edge research and the startup ecosystem. We've worked with dozens of life science companies as operators and consultants, building strong relationships with top universities, companies, and research institutions nationwide, bringing valuable insight to every venture.



## Fast Capital Raising

We expedite funding rounds by leveraging our growing network of 5-10 new investors weekly. This helps portfolio companies quickly close their rounds and focus on innovation. Our team has successfully raised millions for startups and brings that expertise and network to each deal.



## Proven VC Expertise

Our team has a strong track record in venture capital, with successful exits as investors. We bring this expertise and experience to every startup in our portfolio, helping them navigate the journey from early stages to successful outcomes.



# AI Health Fund I Terms

**\$5M**

Fund AUM

**2%**

Management Fee

**20%**

Carried Interest

**10 Year**

Fund Lifespan

**Kramer Levin**

Fund Counsel

**Opus Fund Services**

Fund Admin

We are targeting a first close of \$1M, with a hard cap of \$10M. LPs are offered co-investment rights for follow-on rounds, allowing for greater participation in high-growth opportunities. Our fund is modeled to deliver north of 20% IRR and a 3x MOIC, focusing on long-term value creation and strategic exits. Additionally, we take board observer seats to stay actively engaged and provide strategic guidance to our portfolio companies.

# Our Investment Strategy

**\$200k**

**Checks into Seed  
Rounds**

**20**

**Target Positions**

**5%**

**Average Target  
Ownership**

# Invest Intelligently. Join Us On Our Mission to Transform AI & Healthcare.

Doug Nissinoff

+1-954-204-6745

[doug@intelligencevc.com](mailto:doug@intelligencevc.com)

# DISCLAIMERS & FORWARD-LOOKING STATEMENTS

## **Disclaimer**

The information herein is strictly confidential and is intended for authorized recipients only. The content of this presentation is shown for information purposes only and is not intended as investment advice, or an offer or solicitation with respect to the purchase or sale of any security. The strategy presented herein represents the strategy of the General Partner of the Fund as of the aforementioned date and may vary at the discretion of the General Partner. There is no guarantee that any investment objective will be achieved. Past performance is not indicative of future results. Actual results may differ materially from those expressed or implied. Recipients should not assume that any companies identified in this presentation, are or will be, investments held by the Fund. Any projected returns presented herein are shown for illustrative purposes only. There can be no guarantee the Fund will achieve these results. Venture investing is risky and you could lose some or all of your investment.

## **Forward Looking Statement Disclaimer**

The information contained herein constitutes forward-looking statements. We assume no obligation to update, and you should not unduly rely on such statements.